

GENERAL NOTES

- All work embodied on this plan shall be done in conformity with applicable provisions of Standard Specifications No. 2021 and Standard Drawing No. 2321 and Special Provisions No. 9932 on file in the office of the City Engineer.
- Obstructions (Marking on plan) as directed by the Engineer.
- To be removed under this contract.
- To be removed or relocated by others.
- When Contract does not include a complete quantity for furnishing and applying base, and unless otherwise provided in the special provisions, full compensation for removing and applying water shall be included in the price bid for other contract items of work and no additional compensation shall be allowed for the removal of base.
- Adjust Street Manhole to grade after completion of paving.
- Barbed Wire Property Control Map N.E. Co. South E. Street, McGraw Hill.
- Elev. 980.16 A.S.L.
- It is to be noted that the South E. Street is 20.00' wide at the back of the curb of streets, adjacent to the City of San Bernardino.
- Standard curb base shall be constructed as specified to provide the ultimate elevation of water at curb across the City sidewalk and according to Standard 1901 Section 21.8 Part E.

PROFILE

SCALE: Horiz. 1" = 20'
Vert. 1" = 4'

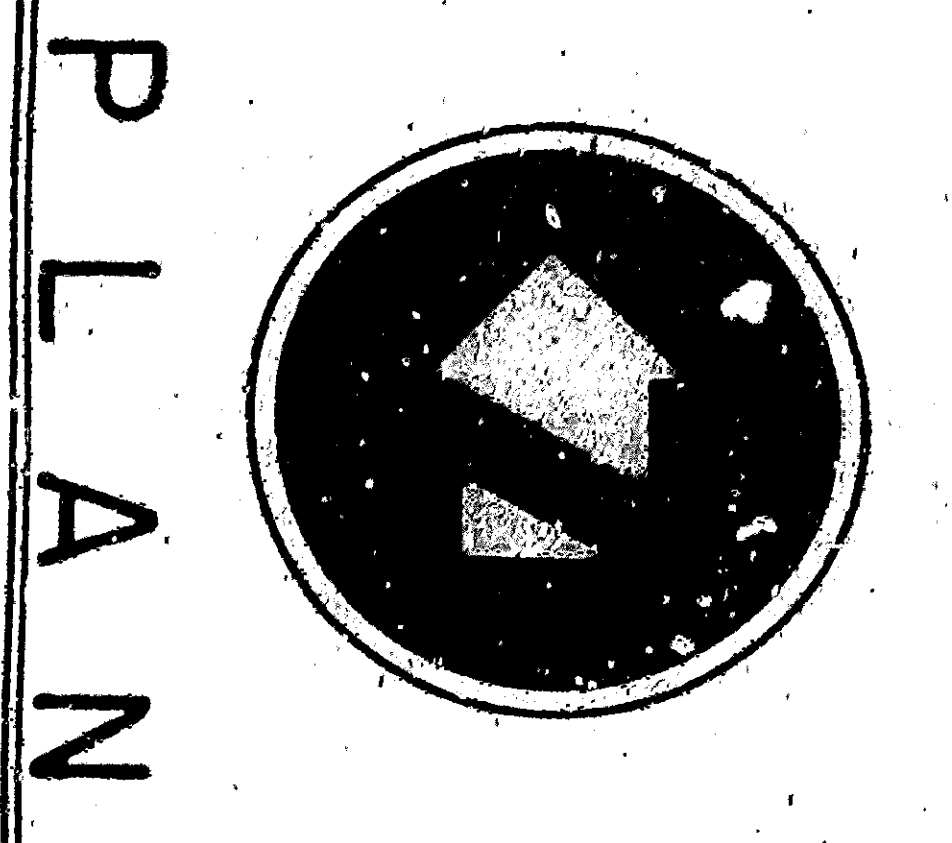
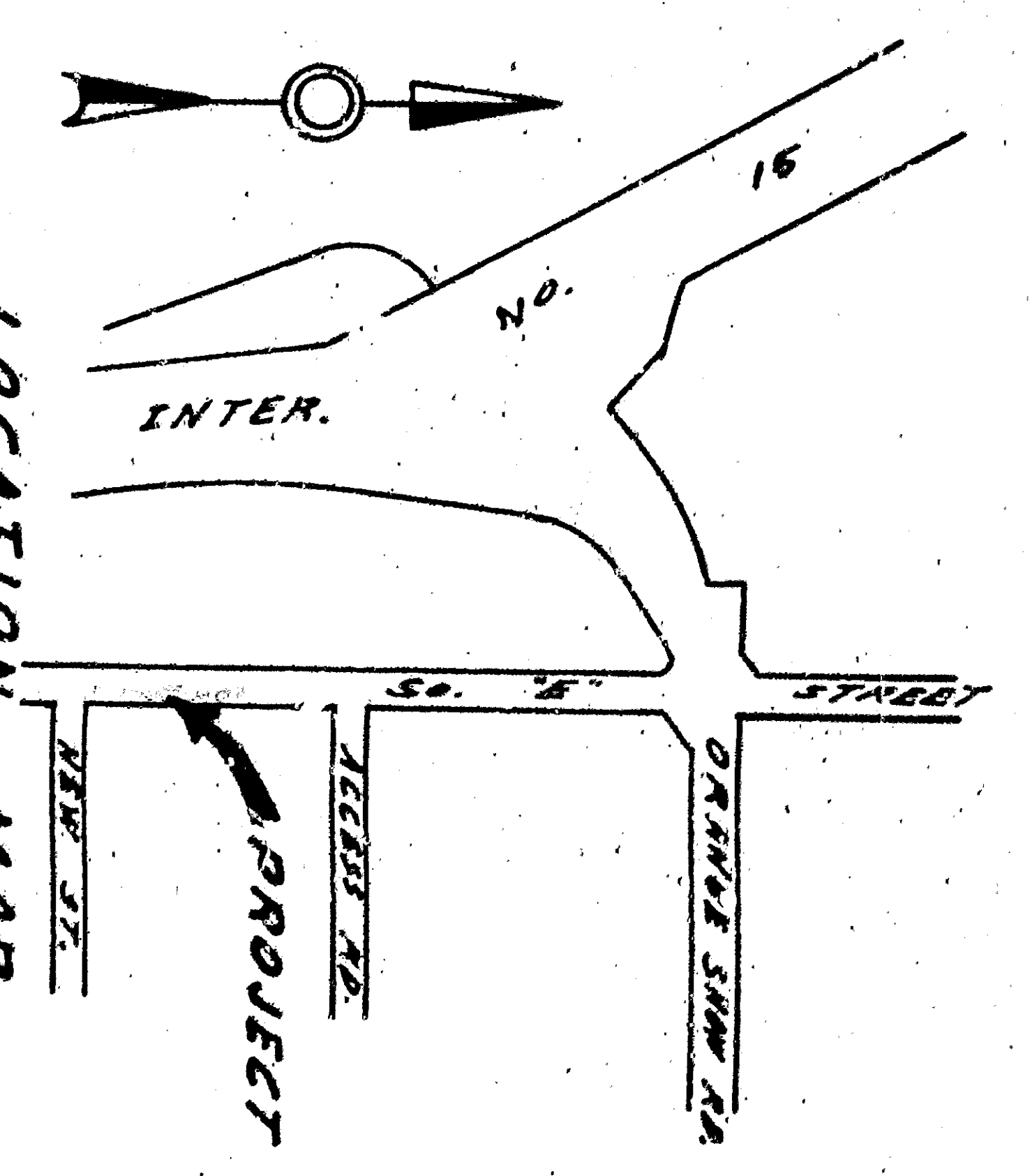
- Parcel 1
Parcel 2
- ② RR # 17388Y
 - ① Barbed Wire Fence
 - ③ Down Guy
 - ② Edison (Air Vent)
 - ③ RR # C.C.R. 125036
 - ② Edison (Air Vent)
 - ① 24" Trac
 - ① 18" Trac

- Sewer Manhole
- ① 18" Trac

- ① End Barbed Wire Fence
- Pile Data
A=300
L=15.07'
L=23.65'
- ② RR C.C.R. VI-125036-A

SOUTH STREET EAST SIDE TYPICAL SECTION

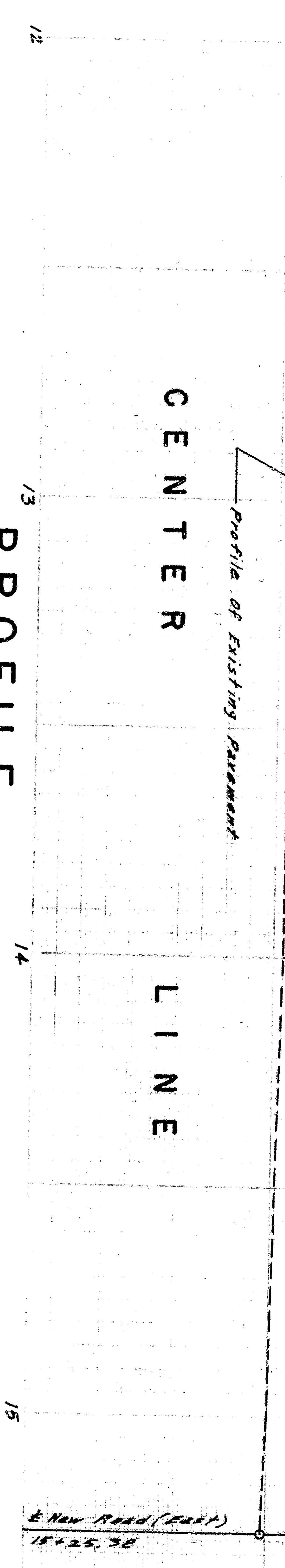
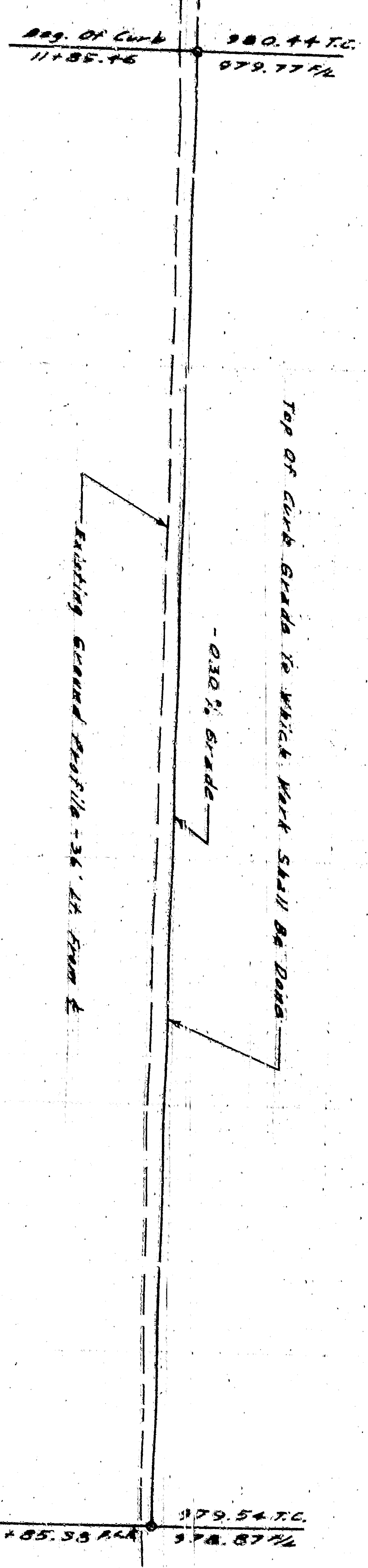
SCALE: Horiz. 1" = 10'
Vert. 1" = 2'



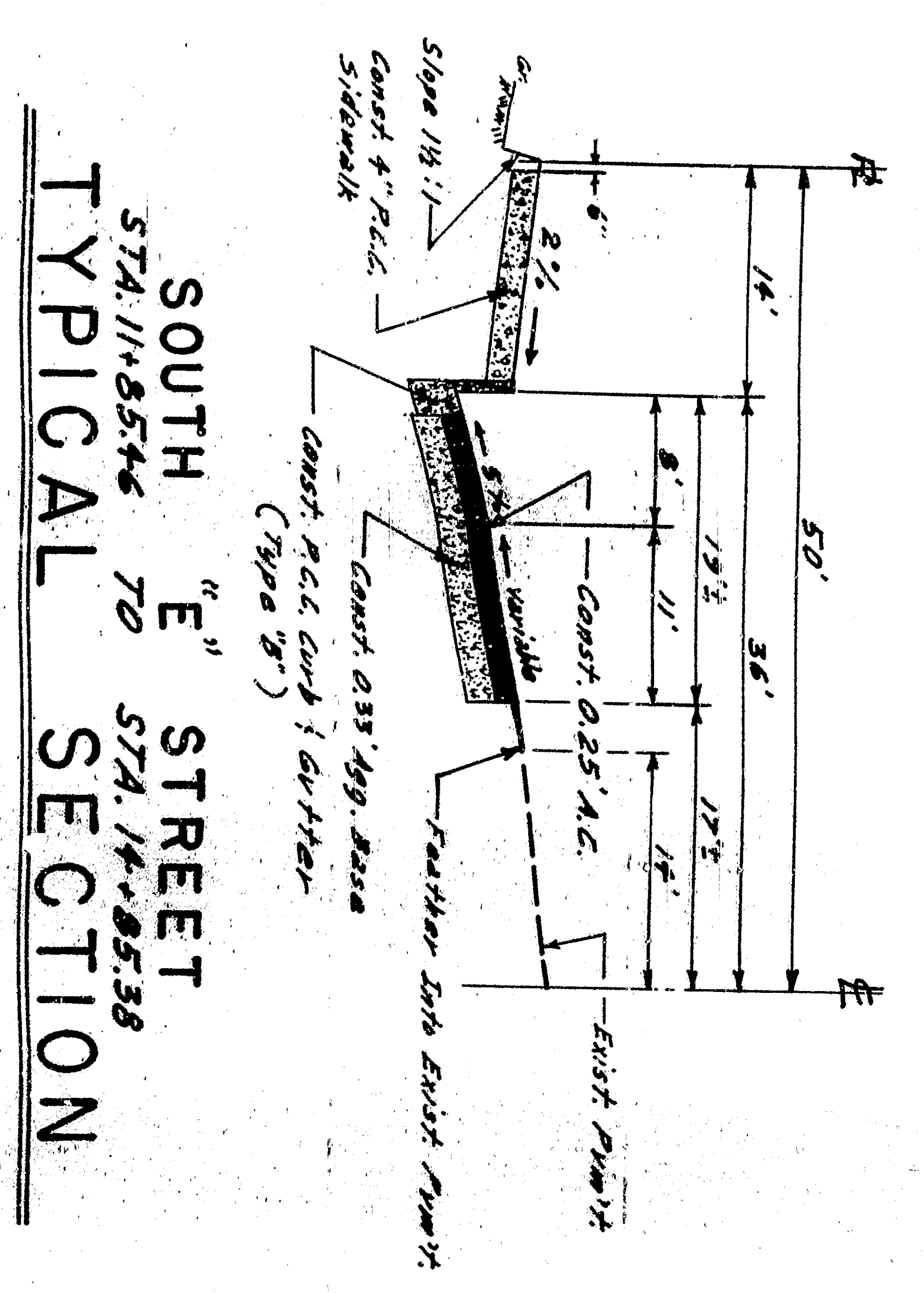
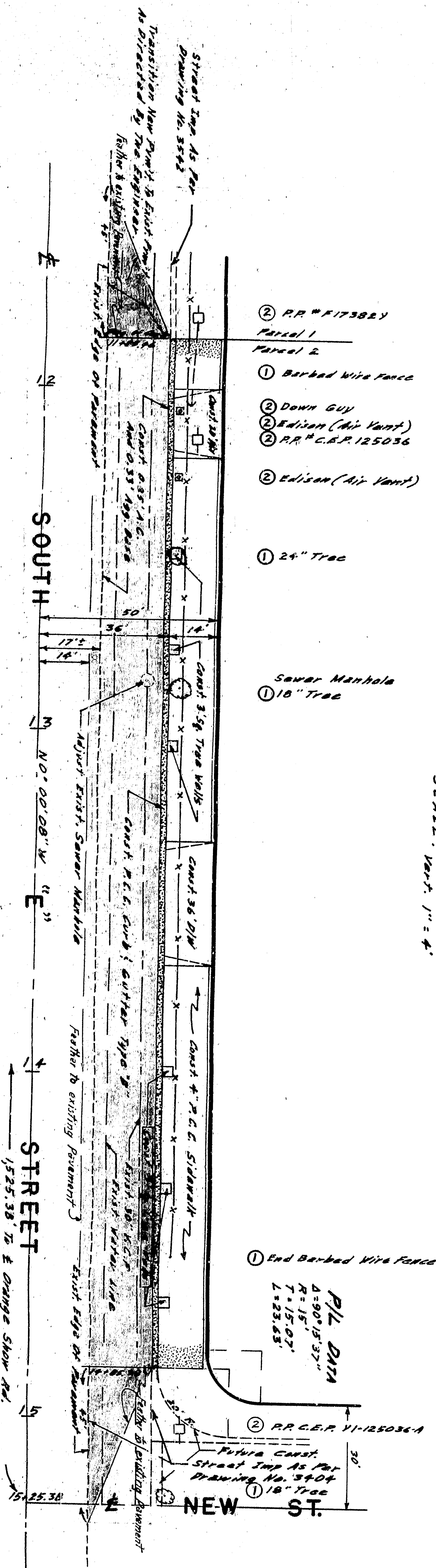
PLAN

SCALE: 1" = 20'

APPROVED	1922	DEPARTMENT OF ENGINEERING
CITY OF SAN BERNARDINO		
REGISTERED CIVIL ENGINEER NO. 46633		
DRAWING NO. 3892		
CHECKED BY		
SHEET 1 OF 3		
RECOMMENDED		
Curb & Gutter And Paving		



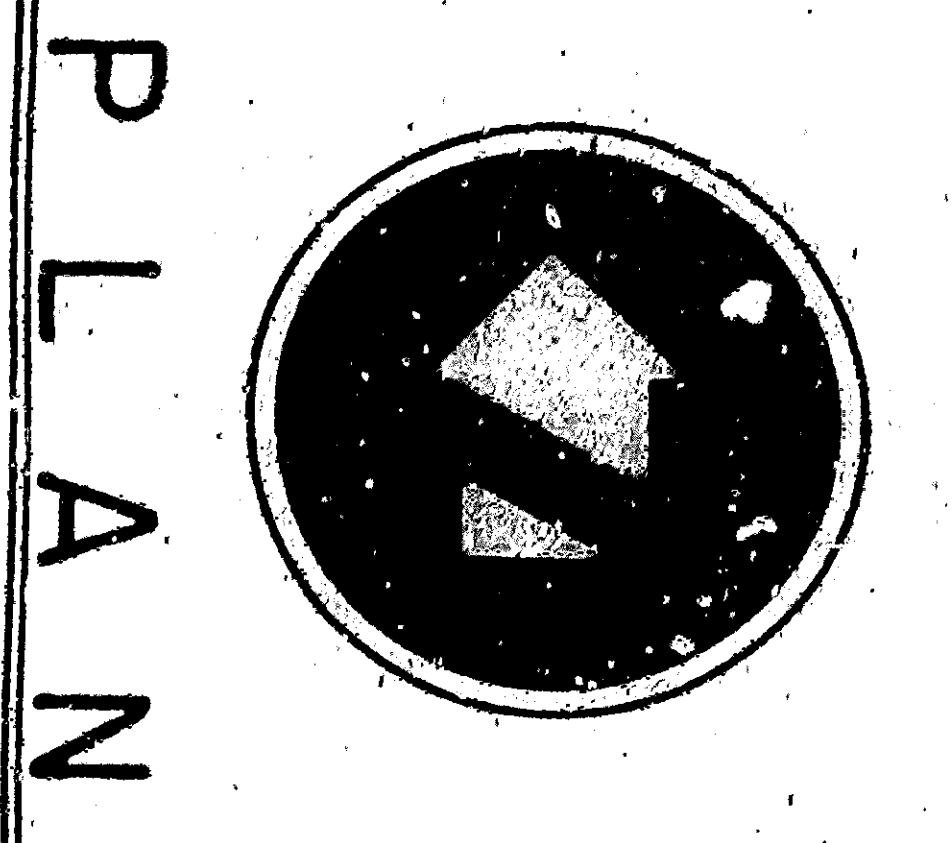
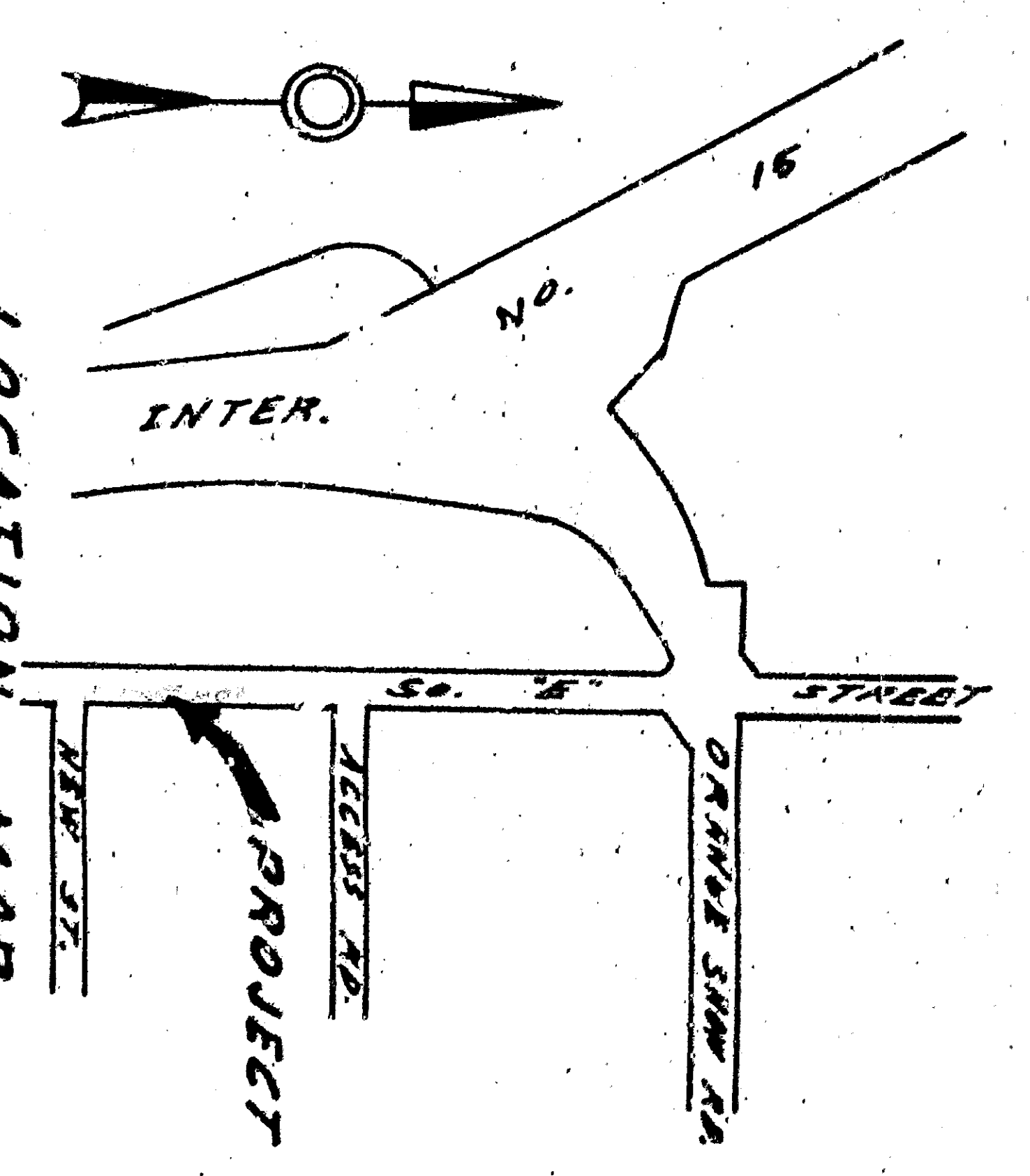
PROFILE
SCALE: HORIZ. 1" = 20'
VERT. 1" = 4'



SOUTH STREET
STA. 11+85.46 TO STA. 14+05.38
TYPICAL SECTION
SCALE: HORIZ. 1" = 10'
VERT. 1" = 2'

GENERAL NOTES

- All work embodied on this plan shall be done in conformity with applicable provisions of Standard Specifications No. 2021 and Standard Drawing No. 2321 and Special Provisions No. 9932 on file in the office of the City Engineer.
- Obstructions (Marking on plan) as directed by the Engineer.
- To be removed under this contract.
- To be removed or relocated by others.
- When Contract does not include a complete quantity for furnishing and applying base, and other materials provided in the special provisions, full compensation for removing and applying water shall be included in the price bid for other contract items of work and no additional compensation shall be allowed thereafter.
- Adjust Street Manhole to grade after completion of paving.
- Barbed Wire Property Control Map No. N.E. Co. South E. Street, McGraw Hill.
- Elev. 980.70 A.S.L.
- It is to be noted that the street is 20.00' wide at the back of the curb of surveys, former records of the County of San Bernardino, California.
- Standard curb base shall be constructed as specified to provide the ultimate width of water drainage across the City sidewalk and according to Standard Section 21.8, Part E.



PLAN
SCALE: 1" = 20'

APPROVED	1922	DEPARTMENT OF ENGINEERING
CITY OF SAN BERNARDINO		
REGISTERED CIVIL ENGINEER NO. 46633		
DRAWING NO. 3892		
CHECKED BY		
SHEET 1 OF 3 SHEETS		
RECOMMENDED		
Curb & Gutter And Paving		